

How to set up your Bitcoin Vault wallet?

Create your own wallet to enjoy the full potential of Bitcoin Vault (BTCV).

Step 1

Go to the official Bitcoin Vault website **bitcoinvault.global**.



The screenshot shows the Bitcoin Vault website interface. At the top left is the Bitcoin Vault logo. To its right are links for 'WHITEPAPER', 'EXPLORER', and 'GITHUB'. On the far right of the header are social media icons for Telegram, Twitter, YouTube, and a language selector set to 'EN'. The main content area is split: the left side features a large Bitcoin Vault logo, and the right side has the heading 'A higher standard in security' followed by the text 'Choose your wallet'. Below this text are four buttons: 'Get it on Windows', 'Get it on Linux OS', 'Get it on macOS', and 'Get it on Google Play'. A dark red banner at the bottom contains the heading 'Why choose Bitcoin Vault?' and three icons with labels: a safe icon for 'Secure', a thumbs up icon for 'Simple', and a puzzle piece icon for 'Flexible'.

Why choose Bitcoin Vault?

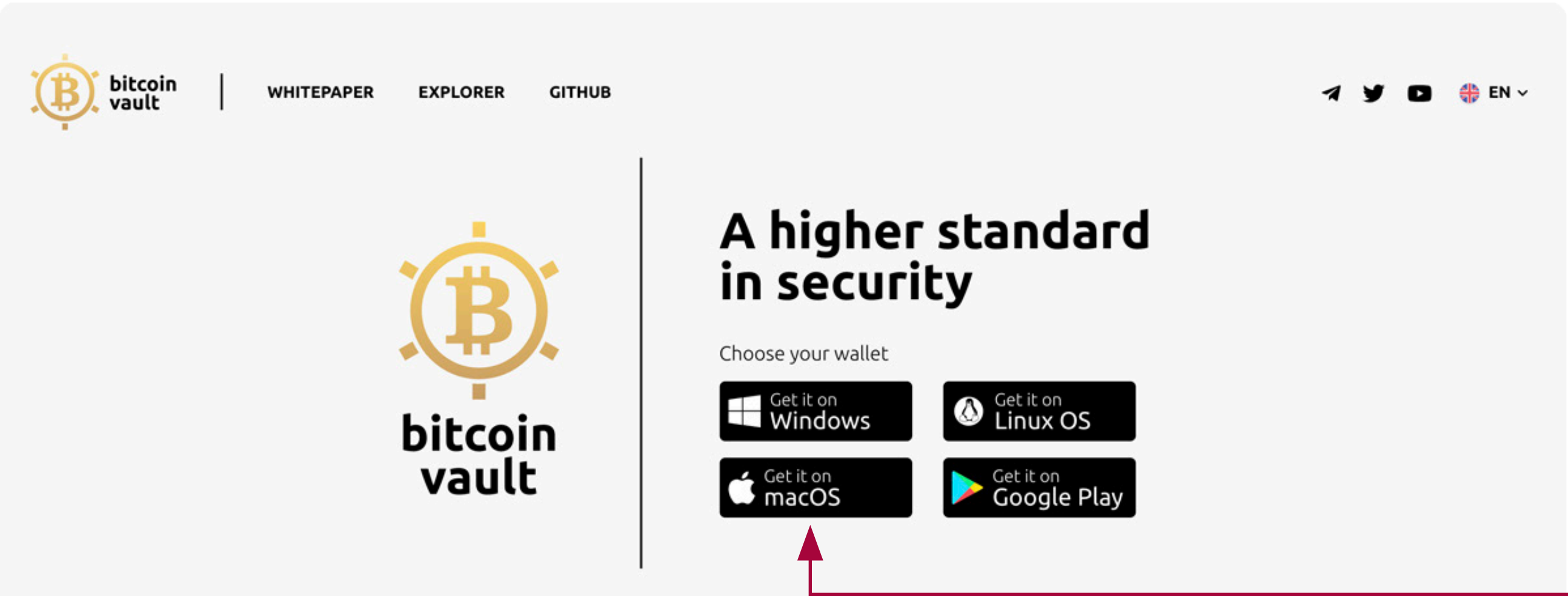
- Secure**
- Simple**
- Flexible**



Bitcoin Vault wallet

Step 2

Choose your operating system and download the wallet software.



Why choose Bitcoin Vault?



Secure



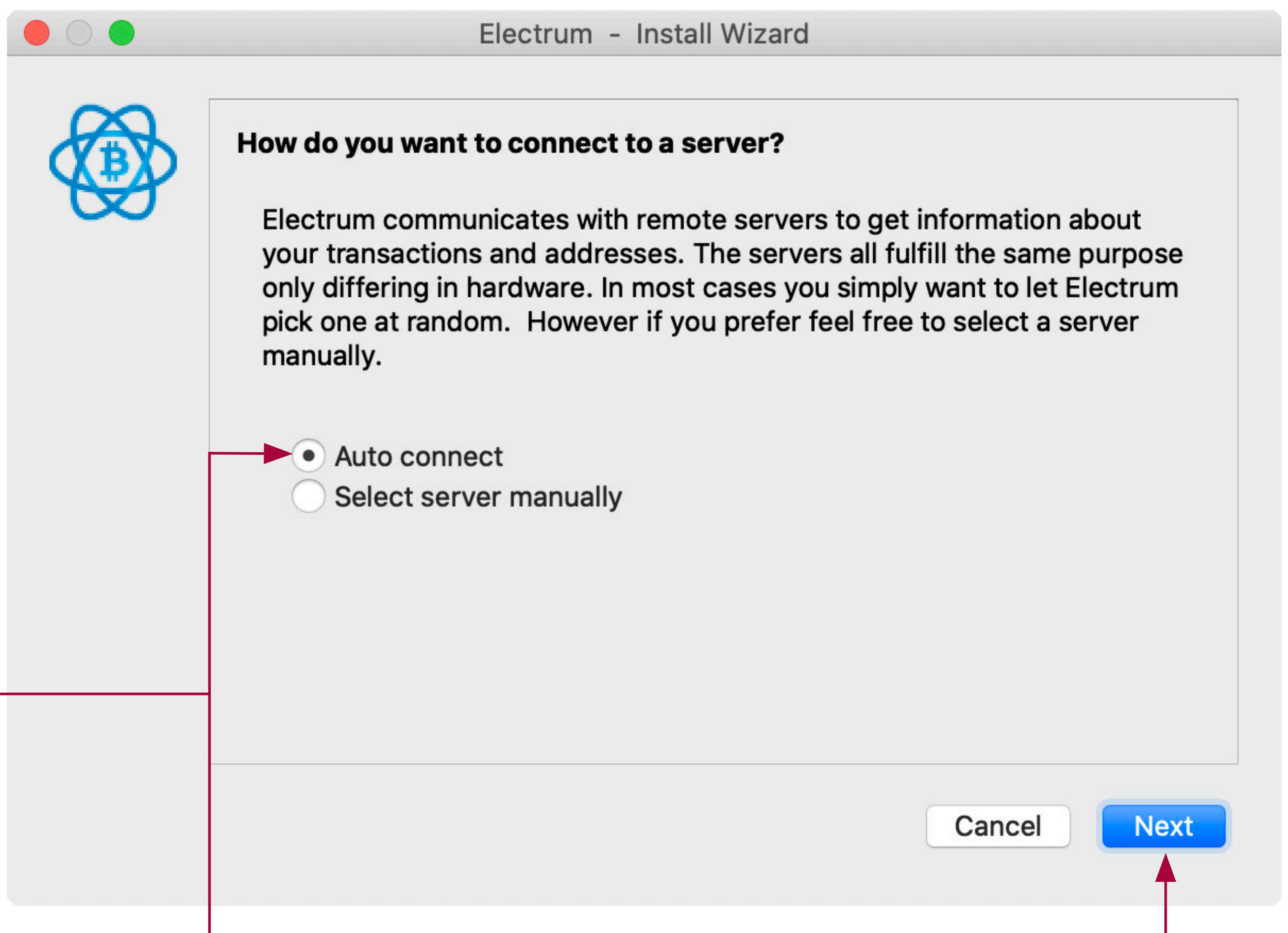
Simple



Flexible

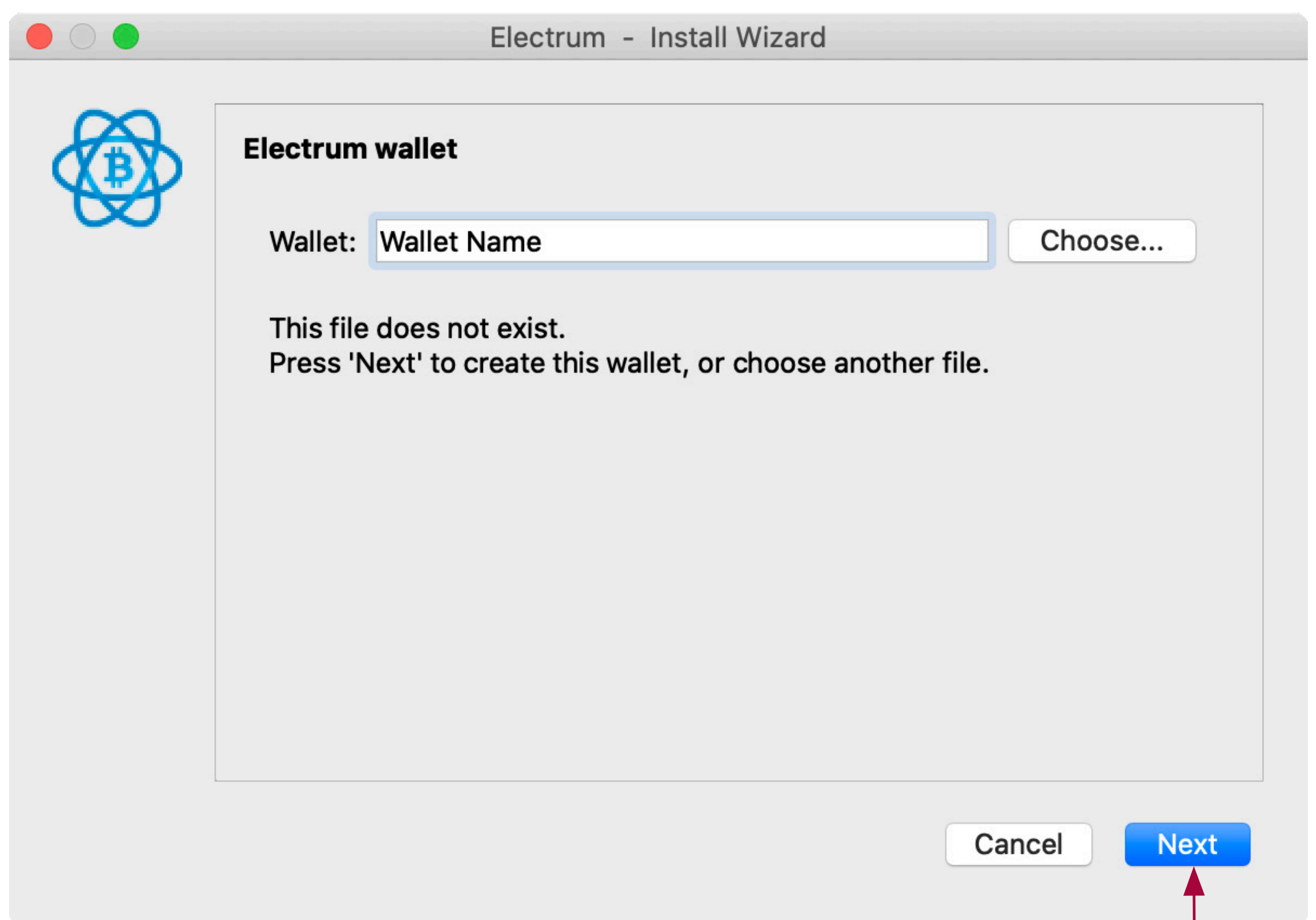
Step 3

Once the download is finished, the installation starts automatically. First, you will be asked to choose a method of connecting with the server. Choose **Auto-connect** and click next.



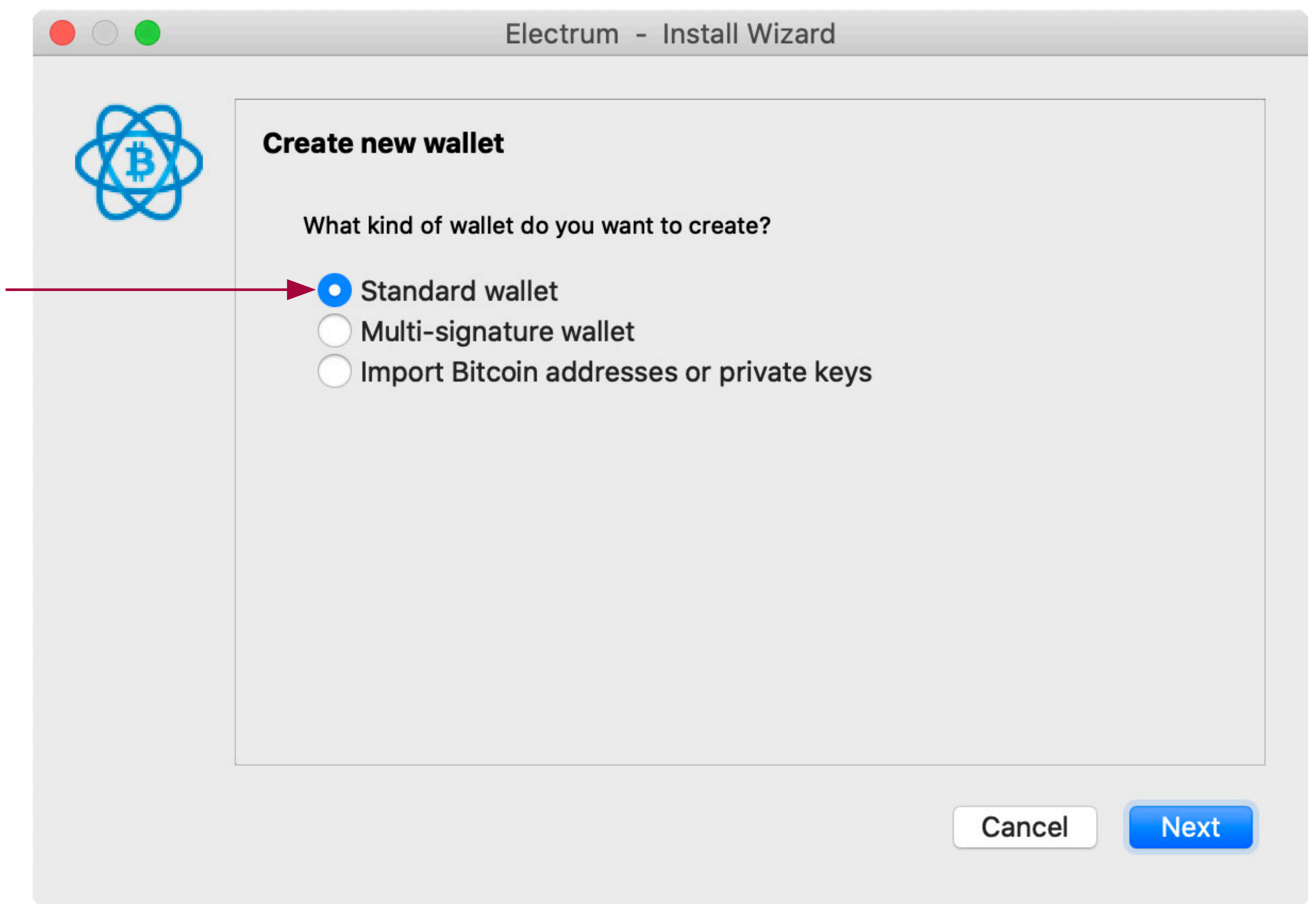
Step 4

Give your wallet a unique name. It can be any name you choose. After choosing the name, click next.



Step 5

Select the type of wallet you want to create. For example, you can choose a **Multi-signature wallet** - which is designed for accounts managed by **more than one person**. It is a good solution for business. If you are **a beginner** – you choose a **Standard wallet**. It will suit all your needs and enable you to receive and send BitcoinVault coins. Then click next.



Step 6

Choose whether you want to create a **new seed** or to **restore a wallet**, using an existing seed. The seed is an individual sequence of usually **12 words** in a particular order. If this is going to be your first wallet, create a new seed. Click on next.



Electrum - Install Wizard



Keystore

Do you want to create a new seed, or to restore a wallet using an existing seed?

☒ Create a new seed

☐ I already have a seed

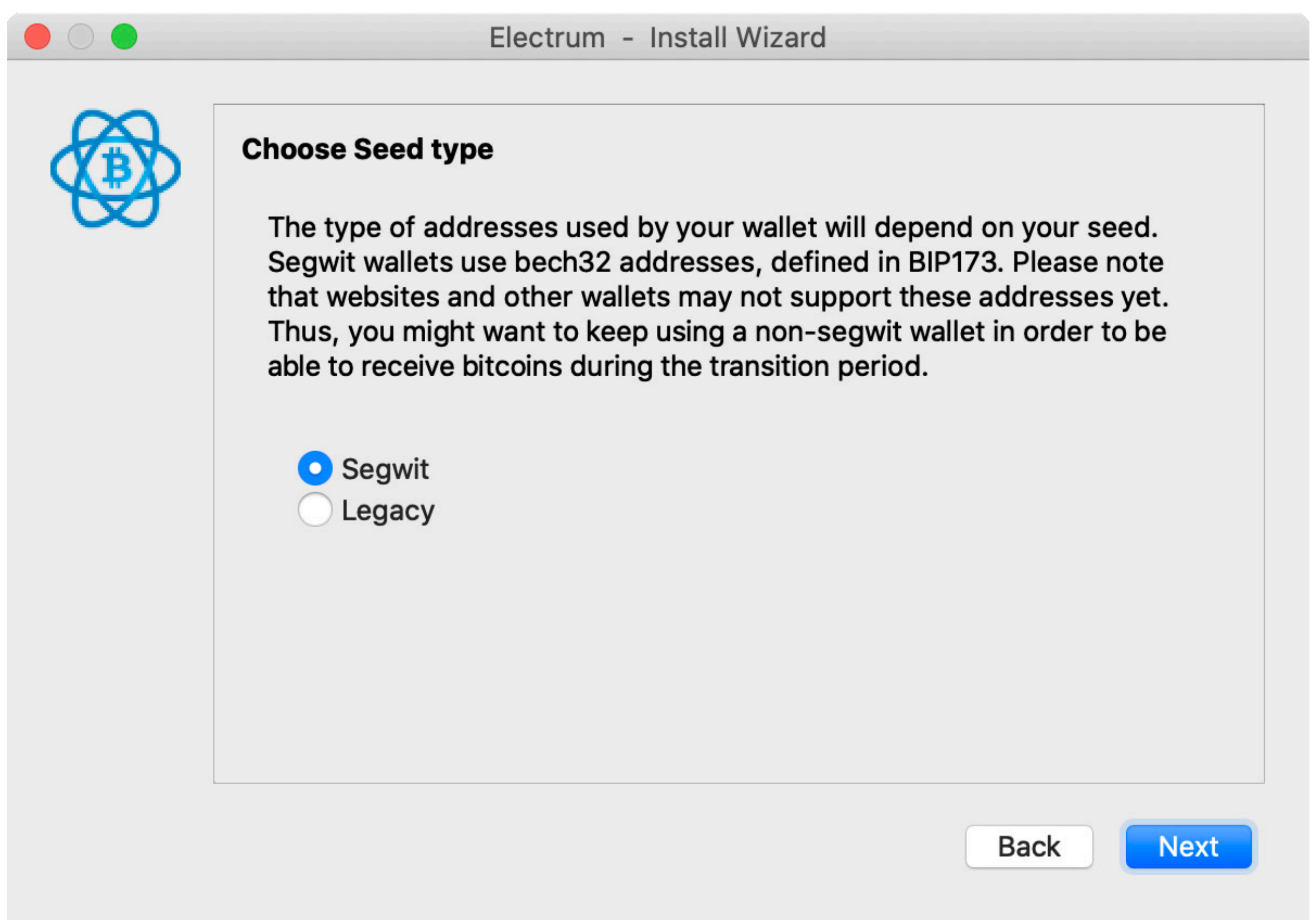
☐ Use a master key

☐ Use a hardware device

Back Next

Step 7

Now, the installation wizard will ask you to choose the seed type. There are two types of addresses: **Segwit and Legacy**. It is related to the type of transaction you want to perform. Choose **“Legacy”** and you can be sure it’s compatible with all the available exchange services. Click next.

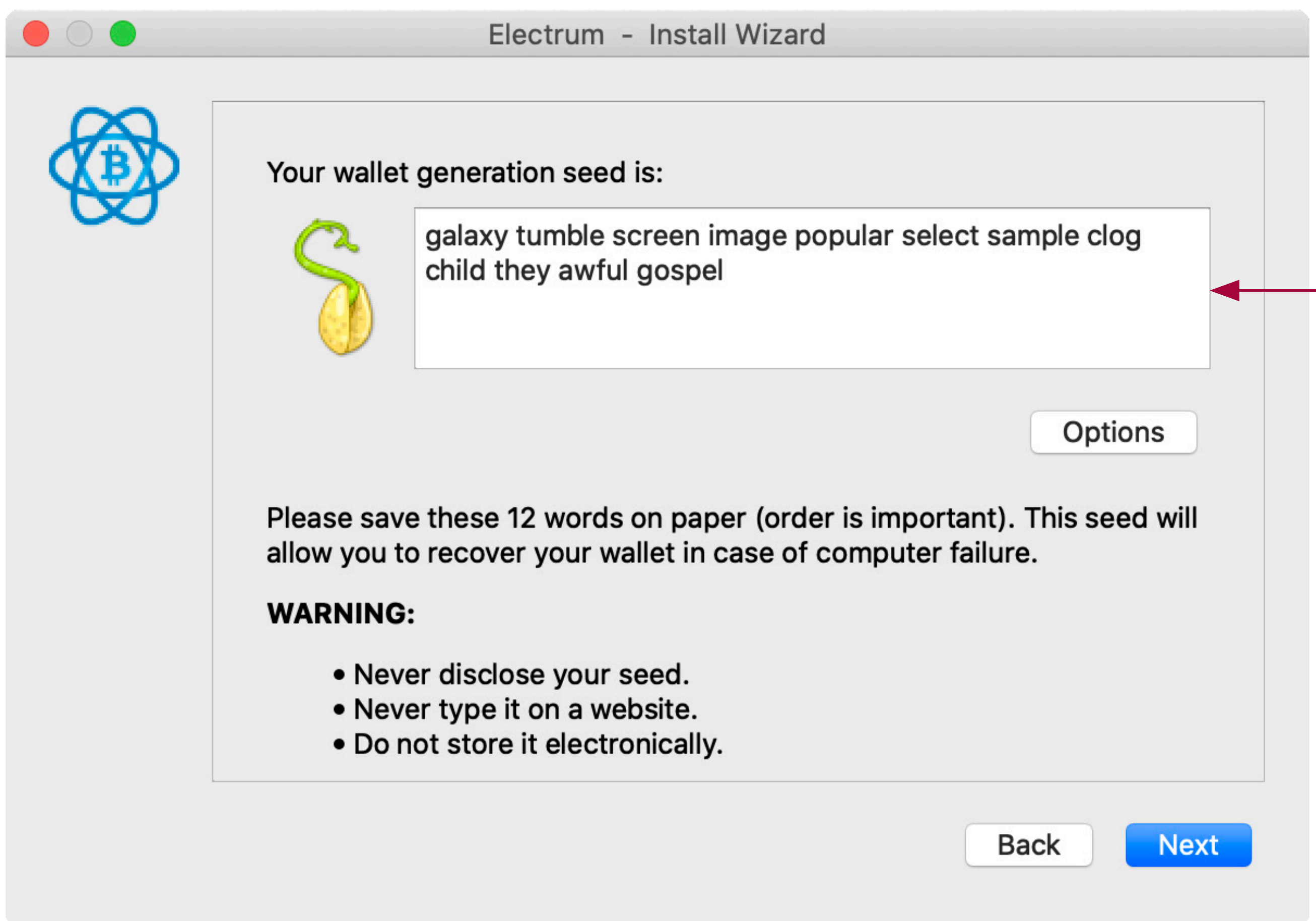


Step 8

Now, the program generates your **seed**.

Remember – these words are extremely important!

The combination will allow you to recover your wallet in case of computer failure. The order is important, don't lose it! Click next.



Step 9

Now confirm your seed by retyping words in the correct order and click next. If you confirm it correctly, you will go to the next page.



Confirm Seed

Your seed is important! If you lose your seed, your money will be permanently lost. To make sure that you have properly saved your seed, please retype it here.



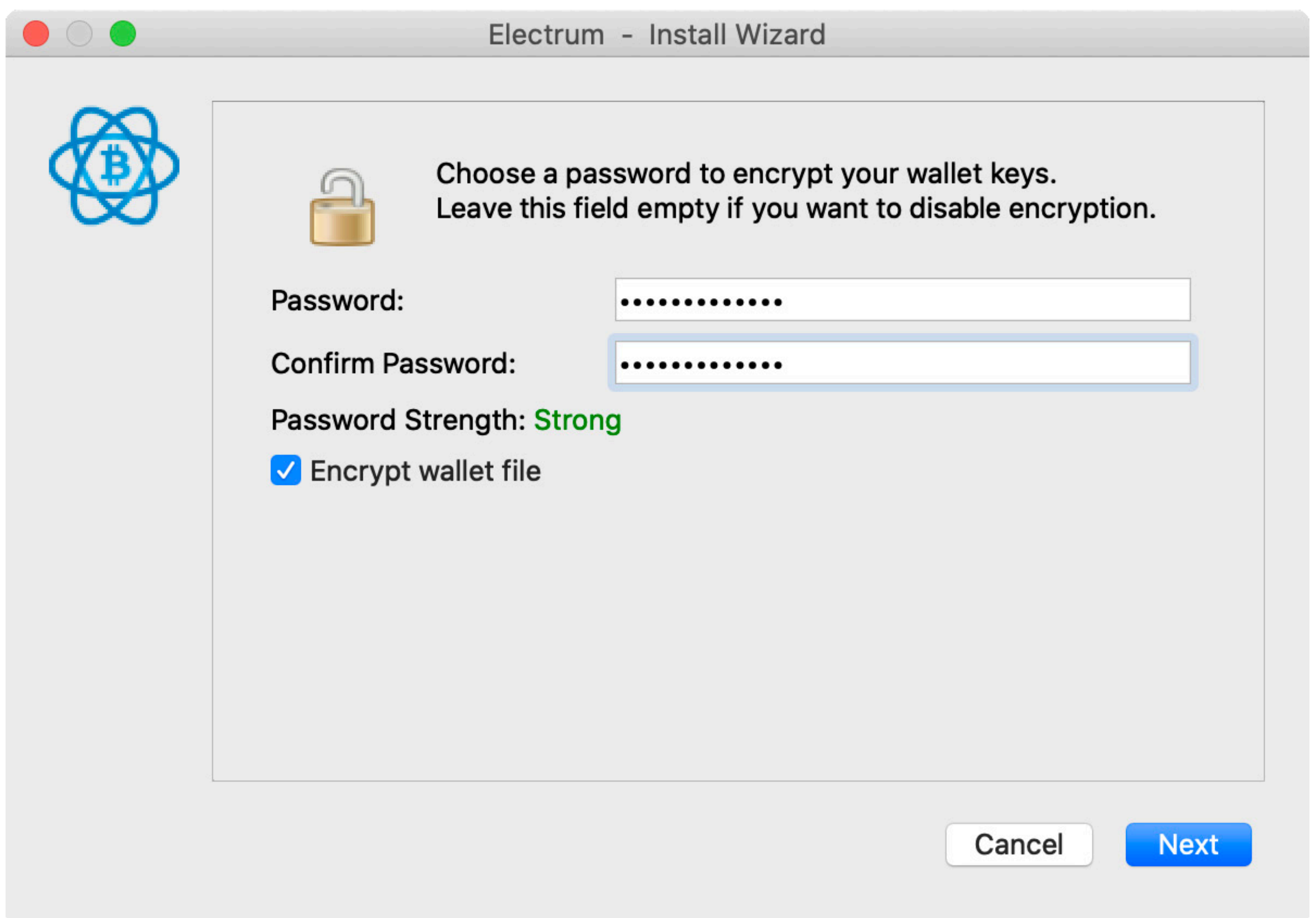
galaxy tumble screen image popular select sample clog
child they awful gospel

Back

Next

Step 10

Choose a password to secure your wallet keys on your computer. Use a combination of capital letters, numbers and special signs to make it as strong as possible. Please notice: this is an extra security, not necessary to fulfill. Click next!



The screenshot shows a window titled "Electrum - Install Wizard". On the left is the Electrum logo (a blue atom-like symbol with a Bitcoin symbol in the center). The main area contains a lock icon and the text: "Choose a password to encrypt your wallet keys. Leave this field empty if you want to disable encryption." Below this are two password input fields. The first is labeled "Password:" and the second is labeled "Confirm Password:". Both fields contain ten dots. Below the fields, it says "Password Strength: Strong" in green. At the bottom left, there is a checked checkbox labeled "Encrypt wallet file". At the bottom right, there are two buttons: "Cancel" and "Next".

Congratulations!

Your wallet has been created! You can transfer your Bitcoin Vault (BTCV) to your wallet. Good luck!